



## Professional IR Thermography Camera

Full resolution at an affordable price

A proven IR thermography tool

### GUIDIR® IR913+

#### Features & Benefits

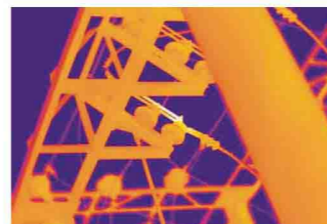
- Precision non- contact temperature measurement
- Fully onboard image processing
- Compact design and easy operation
- Large capacity radiometric image storage
- Professional inspection and reporting software
- License free and rapid delivery



Having pioneered IR thermal imaging technology for years, GUIDIR® IR913+ continues to offer our product users with high efficiency and productivity. With precise temperature measurement, crisp thermal imaging, fully radiometric image storage and analysis, GUIDIR® IR913+ provides an unanticipated choice for powerful thermography tool at an affordable price.

#### Standard Configuration

- Camera with IR lens
- 4" LCD screen
- Li-ion battery
- Battery charger
- CF card
- CF card reader
- AC adapter
- Video cable
- Analysis software
- User manual
- Carrying case



## Technical Specifications

| Imaging Performance       |                                                                                                                                                                                 |
|---------------------------|---------------------------------------------------------------------------------------------------------------------------------------------------------------------------------|
| Detector type:            | Uncooled FPA Microbolometer (320× 240 pixels, 45 μ m)                                                                                                                           |
| Spectral Range:           | 8-14 μ m                                                                                                                                                                        |
| Field of View/Focus:      | 18.2° × 13.7° /50mm                                                                                                                                                             |
| Image Frequency:          | 50Hz PAL/ 60Hz NTSC, non-interlaced                                                                                                                                             |
| Thermal Sensitivity:      | 0.08°C at 30°C                                                                                                                                                                  |
| Electronic Zoom:          | ×2, ×4 interpolating                                                                                                                                                            |
| Image Presentation        |                                                                                                                                                                                 |
| External Display:         | 4" high resolution color LCD (TFT)                                                                                                                                              |
| Video Output:             | PAL/ NTSC, composite video                                                                                                                                                      |
| Measurement               |                                                                                                                                                                                 |
| Temperature Range:        | -20°C - +400°C (up to +1500°C optional)                                                                                                                                         |
| Accuracy:                 | ±2°C or ±2% of reading                                                                                                                                                          |
| Measurement Modes:        | Spot / manual (up to 4 moveable), spot / automatic placement at max, area (up to 4 moveable) displaying either max, min, or average, isotherm, line profile, auto alarm         |
| Emissivity Correction:    | Variable from 0.01 to 1.00 (in 0.01 increment)                                                                                                                                  |
| Measurement Features:     | Automatic correction based on user input for emissivity, reflected ambient temperature, distance, relative humidity, atmospheric transmission and external optics image storage |
| Type:                     | Removable 256MB compact flash memory card                                                                                                                                       |
| File Format:              | IMG (an individual file consists of infrared image and voice annotation if any)                                                                                                 |
| Voice Annotation:         | 8 seconds of digital voice clip per file                                                                                                                                        |
| Power System              |                                                                                                                                                                                 |
| Battery Type:             | Rechargeable Li-ion Camcorder battery, field-replaceable                                                                                                                        |
| Battery Operating Time:   | Over 3 hours continuous operation                                                                                                                                               |
| External Power Operation: | AC adapter 110/ 220 VAC, 50/ 60Hz                                                                                                                                               |
| Environmental             |                                                                                                                                                                                 |
| Operating Temperature:    | -20°C - +60°C                                                                                                                                                                   |
| Storage Temperature:      | -20°C - +60°C                                                                                                                                                                   |
| Humidity:                 | Operating and storing 10% to 95%, non- condensing                                                                                                                               |
| Encapsulation:            | IP54 IEC 529 housing                                                                                                                                                            |
| Shock:                    | Operational:25G, IEC 68-2-29                                                                                                                                                    |
| Vibration:                | Operational:2G, IEC 68-2-6                                                                                                                                                      |
| Physical Characteristics  |                                                                                                                                                                                 |
| Weight:                   | 1.5Kg (including battery)                                                                                                                                                       |
| Size:                     | 164mm x 90mm x 98mm (standard model)                                                                                                                                            |
| Tripod Mounting:          | 1/4" - 20                                                                                                                                                                       |

Wuhan Guide reserves the right to make changes without prior notice.

Guide® Wuhan Guide Infrared Technology Co., Ltd. Add: NO.26 Shucheng Rd, Wuhan, 430070, P.R.China

Tel:86-27-87671925 87671926 87671991 87671983 Fax:86-27-87671927 Http://www.guide-infrared.com E-mail:overseas@guide-infrared.com